

	<p>Gearth Excursions on Open pit mining and Ship breaking yards</p>	<p>F.Gerber D-Hamburg Issue 0</p>
--	--	---

Gearth Excursions on open pit mining and ship breaking yards

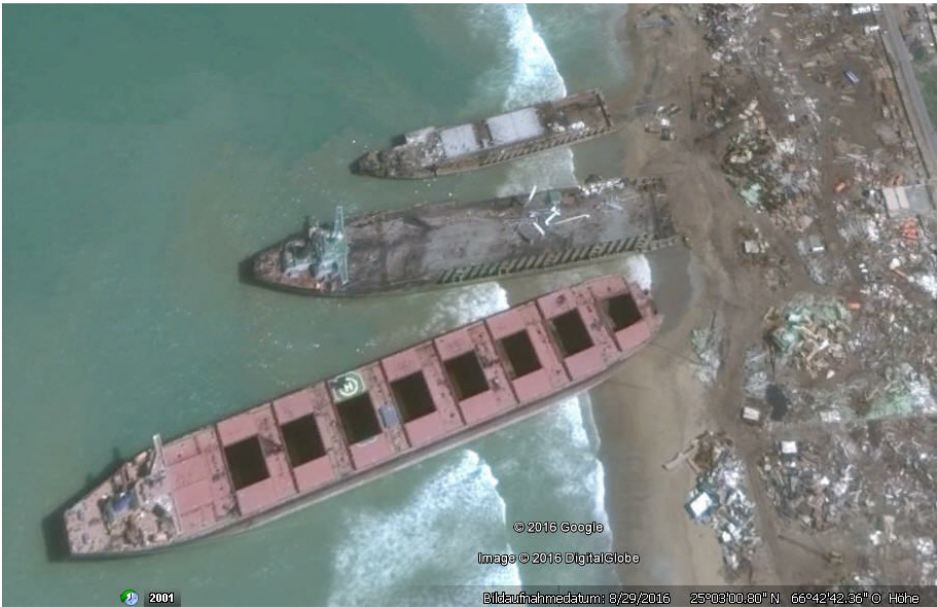
Triggered by some TV-transmissions or articles in magazines some excursions were made 2009 to 2012 in order to find out how the situation looks with gearth.

Ship breaking yards #####

Articles were read and TV-transmissions observed in 2009 (PDF stored in Eigene Dateien\zed\gearth\shipbreaking\). On gearth several sites were found in Pakistan, India and Bangladesh.

- 1 Pakistan (25°04'13.45"N 66°42'25.97"E)
 - 1 India Alang (21°23'46.55"N 72°10'50.12"E)
 - 1 Bangladesh (22°27'36.80"N 91°43'20.03"E)
- Screenshots from 2009 (and maybe 2016)

North of Karachi there is a 10km peace of beach where the ships are rammed to the beach with speed. Then fastened with tows and cut apart from bow to stern. Each time when enought mass is cut from the bow part and the ship is lifted by the tide the ship is pulled further to land (thanks to the heavy engine – can imagine that this is running to push farther to land).



It is imagined that it needs fairly good navigational craftsmanship to ram the ships so close to each other to the beach.

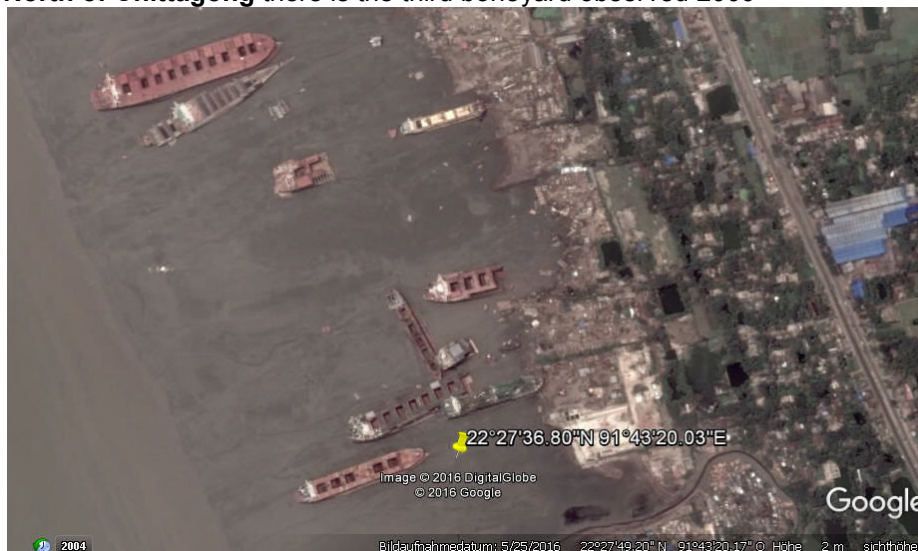
<p>Prepared: Gerber lg</p>	<p>/PRE/j115i03a/</p>	<p>Page : 1</p>	<p>Date: Nov.16</p>
--------------------------------	-----------------------	-----------------	-------------------------

North of Mumbai (Alang) you can also see a site where they scrap ships on the beach, although it has a more orderly impression than Pakistan.



It appears they even knock down oil rigs. (look at the 'E' of the position indication)

North of Chittagong there is the third boneyard observed 2009



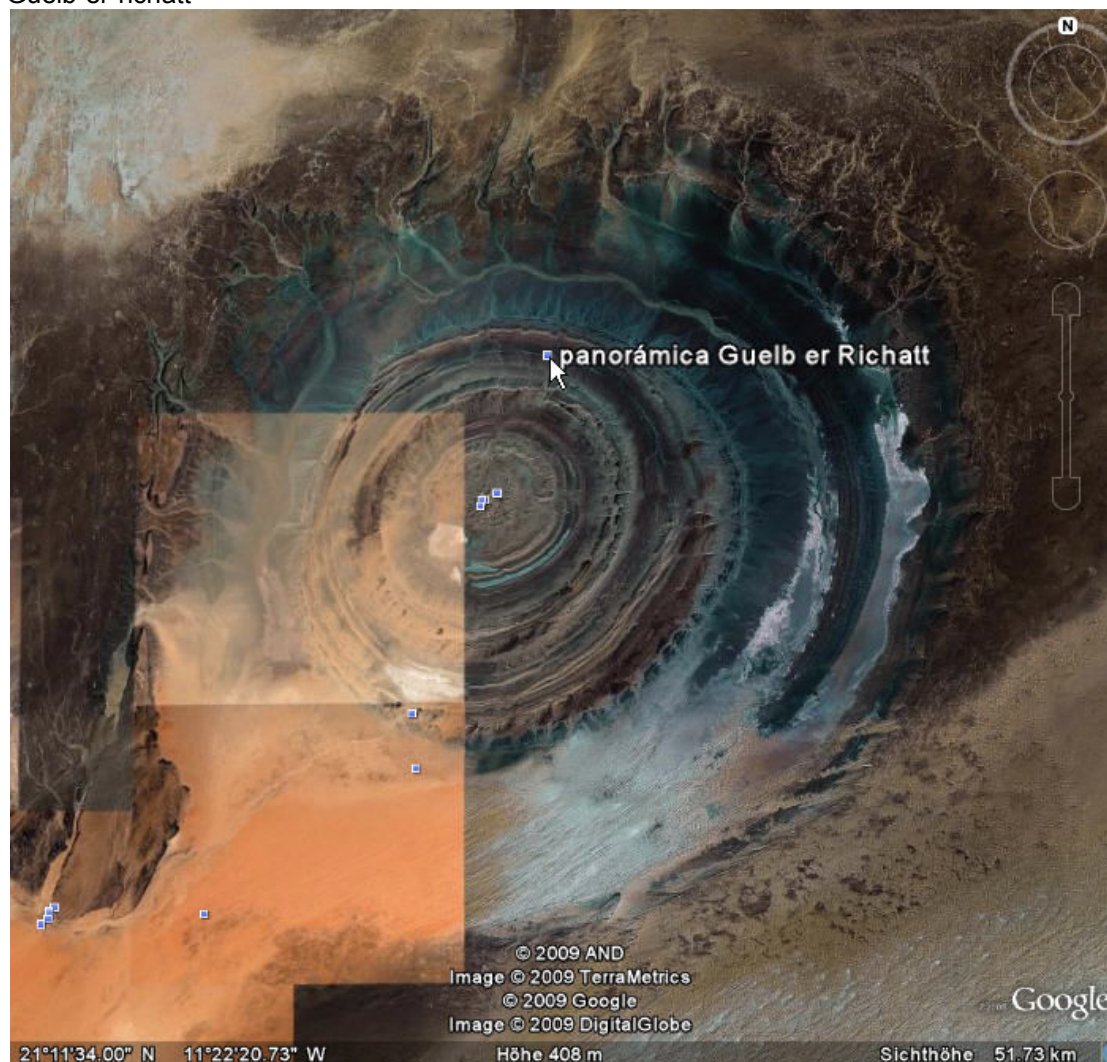
All of these have their own optical style.
Pakistan: most widespread, most improvised
India: seems near to be an industrial yard
Bangladesh: most crammed, most muddy/dirty
All sites have in common that they are settled near to a capital, may be to cater from the human resources.

Open pit mining #####
2009-2010

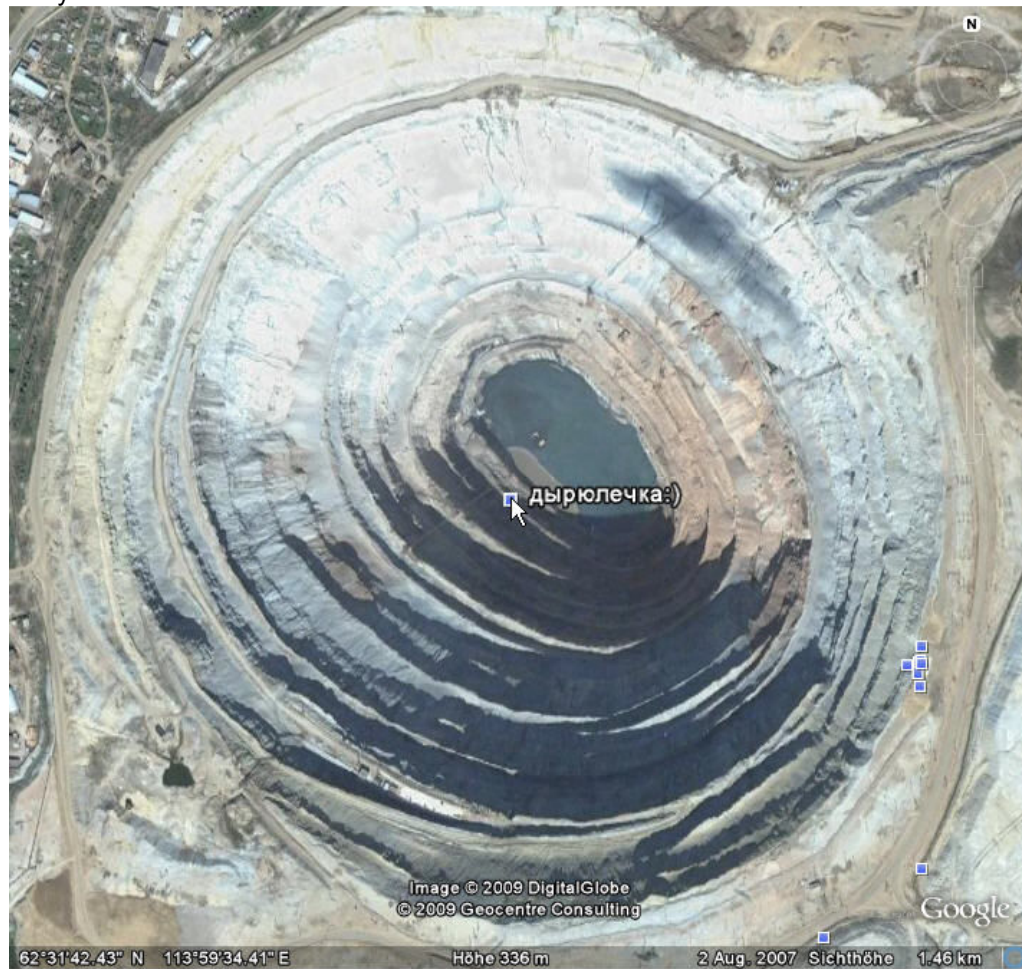
Mines visited in chrono order

#	date	names	position	mineral	rem
01	090407	Guelb-er-richatt, zuvarat	21°11'34.00"N 11°22'20.73"W	iron	conic
02	090407	mirny	62°31'42.43"N 113°59'34.41"E	diamonds	conic
03	090922	chuquicamata	22°18'54.09"S 68°55'45.08"W	copper	
04	090922	Cortez, nevada	40°15'48.34"N 116°43'26.98"W	Gold	
05	090922	Gartzweiler	51°05'02.61"N 6°28'53.87"E	coal	
06	090922	hambach	50°53'51.05"N 6°26'42.49"E	coal	
07	090922	Lac-de-gras	64°42'37.24"N 110°37'32.46"	diamonds	conic
08	091027	weipa	12°43'33.51"S 141°56'00.10"E	bauxit	
09	111017	Us-hibbing	47°25'38.57"N 92°56'15.68"W	iron	
10	120313	yandicoogina	23°20'00.73"S 119°47'31.43"E	iron	trains

Guelb-er-richatt



Mirny



It is only a big hole to get diamonds

Chuquicamata



Cortez



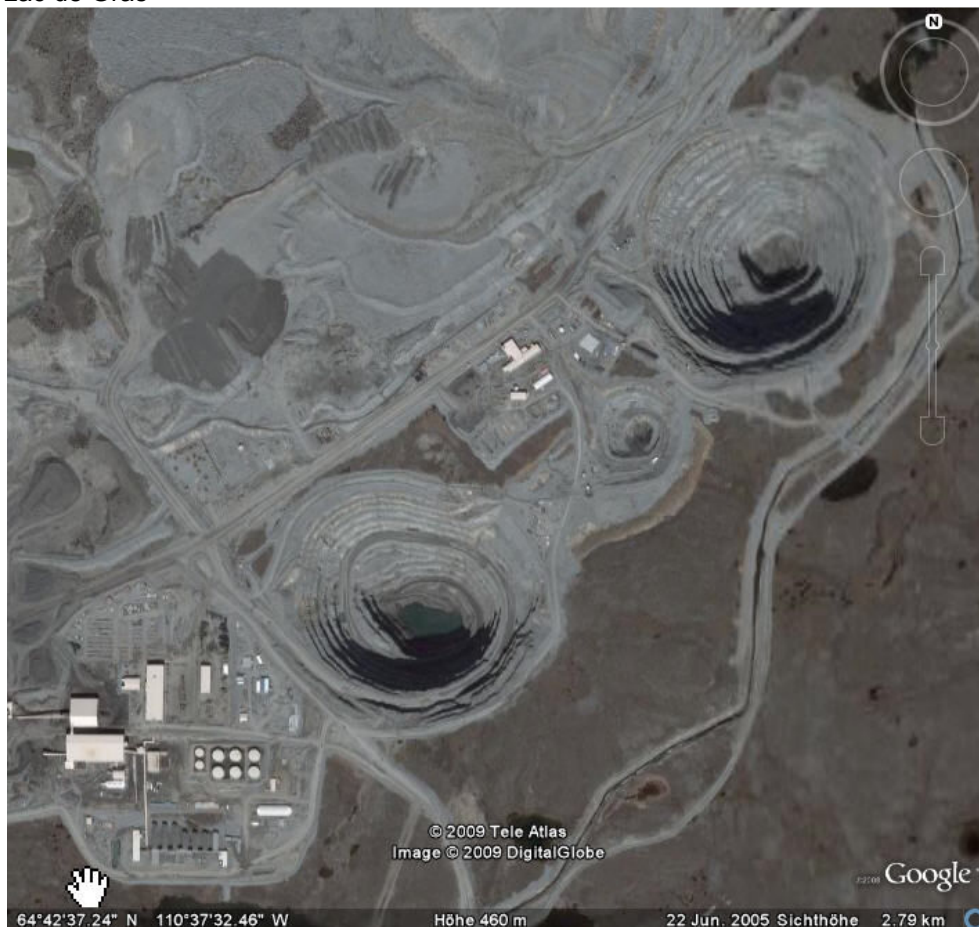
Gartzweiler



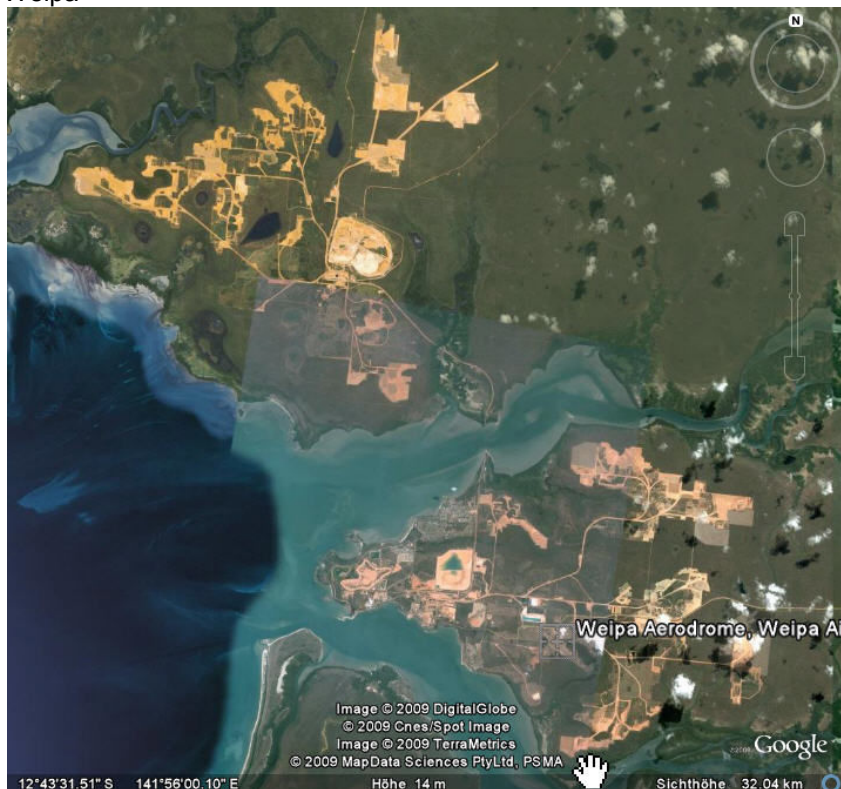
Hambach



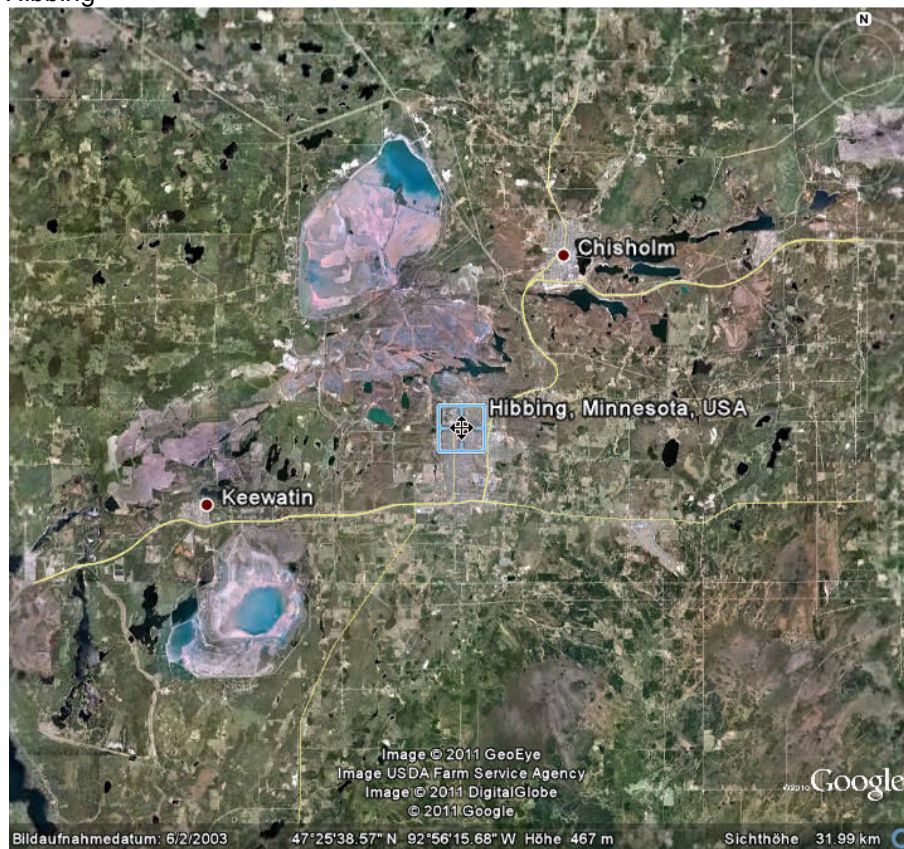
Lac de Gras



Weipa



Hibbing



Yandikoogina,



